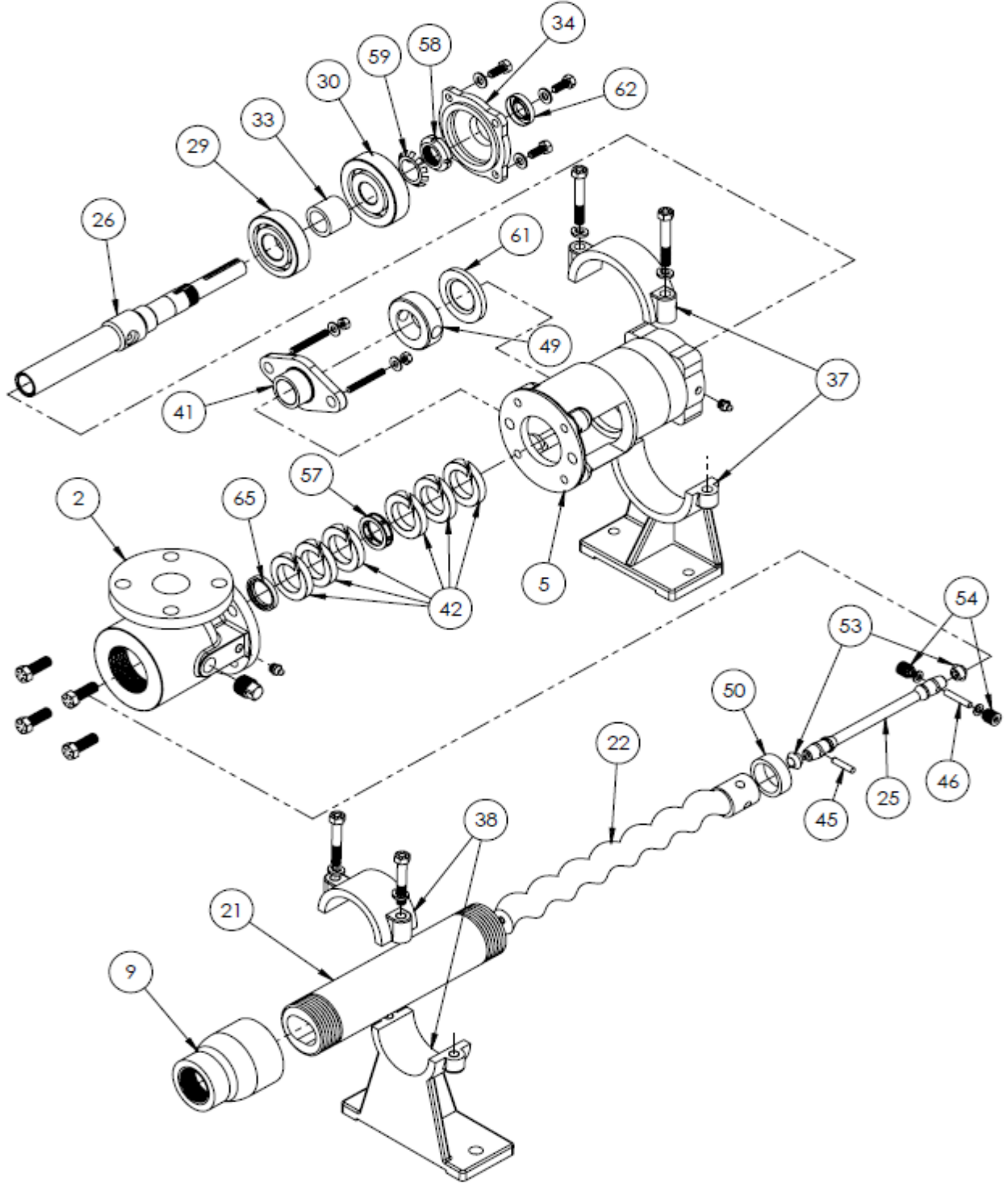




Continental Progressive Cavity Pump CM Model CM3 Pump



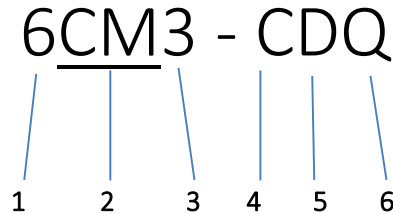
Continental Pump Company

29425 State Hwy B | Warrenton, Missouri 63383 | Tel: 636-456-6006 | Fax: 636-456-4337 | Email: sales@con-pump.com
Visit us at: www.continentalultrapumps.com



CM Model Number Nomenclature:

Materials used in the pumps are based on the fluid to be handled and are indicated in the model number nomenclature.



- (1): Indicates the number of stages for the rotor and stator
- (2): Indicates the pump model designation (CL, CM, CG Model)
- (3): Indicates the size of the rotor and stator
- (4): Indicates the pump body casting material
- (5): Indicates the rotor and internal parts material
- (6): Indicates the stator material

Continental Part Description	Continental Letter Designation	Part Materials
Pump Body	C	Cast Iron
	S	316 Stainless Steel (CF8M)
Rotor	D	Chrome Plated Alloy Steel
	S	Chrome Plated Stainless Steel
Stator*	Q	Buna Nitrile
	R	Natural Rubber
	B	EPDM
	F	Viton®
Internal Parts	CS	Carbon Steel
	S	Stainless Steel

*The Stator Elastomers can be furnished in either: C – Carbon Steel Sleeve or S – Stainless Steel Sleeve.

Example: QC is for Buna Nitrile Elastomer with Carbon Steel Sleeve.

Packing Sets: All sets are Formed and Cut Rings.

Teflon coated: General Service to handle are Caustics, mild acids, chemicals, solvents, oils. Temperature to 300°, pH range 2-10.

Graphite: General Service to handle are Strong caustics, acids, chemicals and high pressure steam. Temperature to 1200° in steam and 800° in oxidizing atmospheres, pH range 0-14.

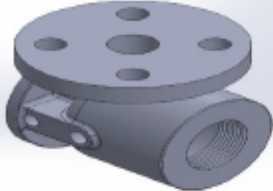
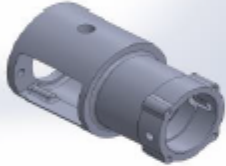
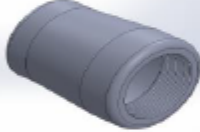
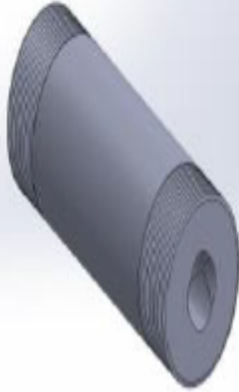
Continental Pump Company

29425 State Hwy B | Warrenton, Missouri 63383 | Tel: 636-456-6006 | Fax: 636-456-4337 | Email: sales@con-pump.com
Visit us at: www.continentalultrapumps.com



CM Model

Replacement Parts for CM3 Pump

Part	Part Name	Continental Pump Part Number	For Continental Pump Model
	Suction Body	CL4-2C CL4-2S	CM3
	Bearing Housing	CL4-5C	CM3
	Reducer	CL4-9C CL4-9S	CM3
	Stator*	3CM3-21QC 3CM3-21BC 3CM3-21RC 3CM3-21FC	CM3
		6CM3-21QC 6CM3-21BC 6CM3-21RC 6CM3-21FC	CM3
		3CM3-21QS 3CM3-21BS 3CM3-21RS 3CM3-21FS	CM3
		6CM3-21QS 6CM3-21BS 6CM3-21RS 6CM3-21FS	CM3

*Other elastomer options are available upon request

Continental Pump Company

29425 State Hwy B | Warrenton, Missouri 63383 | Tel: 636-456-6006 | Fax: 636-456-4337 | Email: sales@con-pump.com
Visit us at: www.continentalultrapumps.com



Part	Part Name	Continental Pump Part Number	For Continental Pump Model
	Rotor**	3CM3-22D 6CM3-22D	CM3
		3CM3-22S 6CM3-22S	CM3
**Undersized and Non-Plated Rotors are available upon request			
	Connecting Rod	CL4-25CS CL4-25S	CM3
	Drive Shaft	CL4-26CS CL4-26S	CM3
	Ball Bearing (Radial)	CL4-29	CM3
	Ball Bearing (Thrust)	CL4-30	CM3
	Bearing Spacer	CL4-33CS	CM3
	Bearing Cover Plate	CL4-34C	CM3
	Pump Support	CL4-37C	CM3

Continental Pump Company

29425 State Hwy B | Warrenton, Missouri 63383 | Tel: 636-456-6006 | Fax: 636-456-4337 | Email: sales@con-pump.com
 Visit us at: www.continentalultrapumps.com



Part	Part Name	Continental Pump Part Number	For Continental Pump Model
	Stator Support***	CL4-38C	CM3
	Packing Gland	CL4-41C CL4-41S	CM3
	Packing Set, Teflon Coated	CL4-42	CM3
	Packing Set, Graphite	CL4-42G	CM3
	Rotor Pin	CL4-45CS CL4-45S	CM3
	Shaft Pin	CL4-46CS CL4-46S	CM3
	Shaft Collar	CL4-49CS	CM3
	Rotor Band	CL4-50CS CL4-50S	CM3
	Connecting Rod Washer (2 Req.)	CL4-53Q CL4-53B CL4-53F	CM3
	Drive Pin Retainer Screw (2 Req.)	CL4-54CS CL4-54S	CM3

***2 Stator Supports are required for 6CM3 pumps.

Continental Pump Company

29425 State Hwy B | Warrenton, Missouri 63383 | Tel: 636-456-6006 | Fax: 636-456-4337 | Email: sales@con-pump.com
Visit us at: www.continentalultrapumps.com



Part	Part Name	Continental Pump Part Number	For Continental Pump Model
	Lantern Ring, 1 Piece	CL4-57S	CM3
	Bearing Lock Nut, Carbon Steel	CL4-58	CM3
	Bearing Lock Washer, Carbon Steel	CL4-59	CM3
	Grease Seal (Radial)	CL4-61	CM3
	Grease Seal (Thrust)	CL4-62	CM3
	Packing Gland Insert	CL4-65S	CM3
	Drive Pin Washer, Stainless Steel (2 Req.)	CL4-73	CM3
	Component Seal	CL4-81F	CM3
*Other elastomer options are available upon request			
	Component Seal Gland	CL4-82S	CM3
<i>No Image Available</i>	Cartridge Mechanical Seal	Contact Us	CM3

Continental Pump Company

29425 State Hwy B | Warrenton, Missouri 63383 | Tel: 636-456-6006 | Fax: 636-456-4337 | Email: sales@con-pump.com
 Visit us at: www.continentalultrapumps.com



CM Model



Replacement Kits for CM3 Pump

Part	Part Name	Continental Pump Part Number	For Continental Pump Model
	<u>Hydraulic Motor Kit</u> Includes: Hydraulic Motor, Motor Adapter, Adapter Flange(CL4-35A), Grease Seal (CL4-62), & Couplings: L-099 x 1", L-099 x 15/16" & L-099/100 Sox Spider.	CL4-HYD	CM3
	<u>Hydraulic Kit (No Motor)</u> Includes: Hydraulic Motor Adapter, Adapter Flange (CL4-35A), Grease Seal (CL4-62) & Couplings: L-099 x 1", L-099 x 15/16" & L-099/100 Sox Spider.	CL4-HYDNM	CM3
	<u>Connecting Rod Kit:</u> Includes: QTY 1: Connecting Rod, Rotor Pin, Shaft Pin, Rotor Band. QTY 2: Connecting Rod Washers, Drive Pin Retainer Screws and Drive Pin Washers.	CL4-25KQC CL4-25KBC CL4-25KFC	CM3
		CL4-25KQS CL4-25KBS CL4-25KFS	CM3

Continental Pump Company

29425 State Hwy B | Warrenton, Missouri 63383 | Tel: 636-456-6006 | Fax: 636-456-4337 | Email: sales@con-pump.com
 Visit us at: www.continentalultrapumps.com



Part	Part Name	Continental Pump Part Number	For Continental Pump Model
	<u>Bearing Kit:</u> Includes: Ball Bearing (Radial & Thrust), Bearing Spacer, Bearing Lock Nut & Washer, Grease Seal (Radial & Thrust)	CL4-29K	CM3
	<u>Component Seal Kit:</u> Includes QTY 1: Viton Component Seal & Stainless Steel Gland	CL4-81KFS	CM3

Continental Pump Company

29425 State Hwy B | Warrenton, Missouri 63383 | Tel: 636-456-6006 | Fax: 636-456-4337 | Email: sales@con-pump.com
 Visit us at: www.continentalultrapumps.com



Materials of Construction

All Continental Pump casting materials are Class 40# grey cast iron and CF8M (316) stainless steel. The best metal for your application would depend on how corrosive your liquid is. We offer an epoxy coating for an additional charge and can be applied to the suction housing and reducer. The epoxy seals the cast iron from the material being pumped.

Stators are available in 4 types of elastomers. The rubber materials are: Buna Nitrile, Natural Rubber, EPDM and Viton®. The rubber that is best for your application depends on what liquid you are pumping and at what temperature, as it plays a vital role in which to select.

The rotors are available in Chrome Plated Alloy Steel and Stainless Steel, but is dependent on the pH level and the corrosiveness of your liquid. In certain pH levels a non plated rotor may need to be used, as it could lift the chrome off of the rotor.

Looking for simplicity? We offer complete Progressive Cavity Pump Units. They are constructed on a steel base to fit your specific application needs. The Unit consists of a Pump, a Steel Base & Guard, a Gear Reducer and Motor. Also available are Belt Drive Units and many other base options.

Space Challenged? If you are needing a different arrangement from traditional piping, we can rotate the housing up to 270° for the CL, CM & CG Model Pumps.

Don't need a complete pumping unit but looking for drive options? We can still help, whether attached to a pump or sold separately we can supply you with Hydraulic Adapters, VFD's, Gear Boxes and Motors.

Continental Pump Company

29425 State Hwy B | Warrenton, Missouri 63383 | Tel: 636-456-6006 | Fax: 636-456-4337 | Email: sales@con-pump.com
Visit us at: www.continentalultrapumps.com