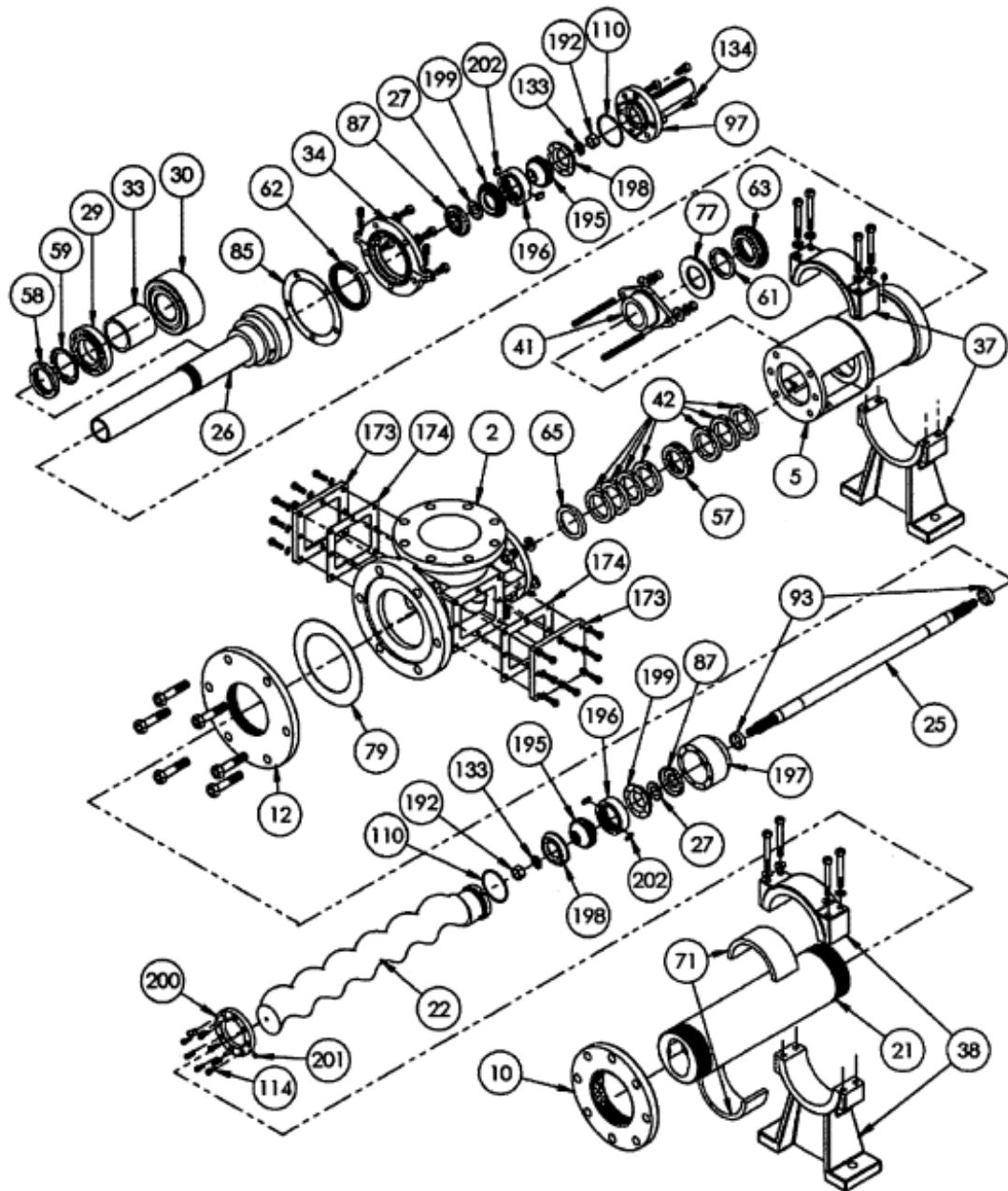




Continental Progressive Cavity Pump CG Model CG8 Pump



Continental Pump Company

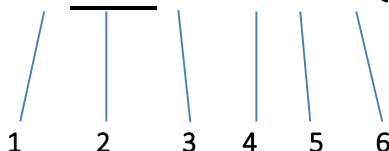
29425 State Hwy B | Warrenton, Missouri 63383 | Tel: 636-456-6006 | Fax: 636-456-4337 | Email: sales@con-pump.com
Visit us at: www.continentalultrapumps.com



CG Model Number Nomenclature:

Materials used in the pumps are based on the fluid to be handled and are indicated in the model number nomenclature.

2CG8 - CDQ



- (1): Indicates the number of stages for the rotor and stator
- (2): Indicates the pump model designation (CL, CM, CG Model)
- (3): Indicates the size of the rotor and stator
- (4): Indicates the pump body casting material
- (5): Indicates the rotor and internal parts material
- (6): Indicates the stator material

Continental Part Description	Continental Letter Designation	Part Materials
Pump Body	C	Cast Iron
	S	316 Stainless Steel (CF8M)
Rotor	D	Chrome Plated Alloy Steel
	S	Chrome Plated Stainless Steel
Stator*	Q	Buna Nitrile
	R	Natural Rubber
	B	EPDM
	F	Viton®
Internal Parts	CS	Carbon Steel
	S	Stainless Steel

*The Stator Elastomers can be furnished in either: C – Carbon Steel Sleeve or S – Stainless Steel Sleeve.

Example: QC is for Buna Nitrile Elastomer with Carbon Steel Sleeve.

Packing Sets: All sets are Formed and Cut Rings.

Teflon coated: General Service to handle are Caustics, mild acids, chemicals, solvents, oils. Temperature to 300°, pH range 2-10.

Graphite: General Service to handle are Strong caustics, acids, chemicals and high pressure steam. Temperature to 1200° in steam and 800° in oxidizing atmospheres, pH range 0-14.

Continental Pump Company

29425 State Hwy B | Warrenton, Missouri 63383 | Tel: 636-456-6006 | Fax: 636-456-4337 | Email: sales@con-pump.com
Visit us at: www.continentalultrapumps.com



CG Model

Replacement Parts for CG8 Pump

Part	Part Name	Continental Pump Part Number	For Continental Pump Model
	Suction Body with Cleanouts	CG8/10-2C	CG8
	Bearing Housing	CL10-5C	CG8
	Flanged Reducer	CG8-10C	CG8
	Adapter Flange	CG8-12C	CG8
	Stator*	1CL8-21QC 1CL8-21BC 1CL8-21RC 1CL8-21FC	CG8
		2CL8-21QC 2CL8-21BC 2CL8-21RC 2CL8-21FC	CG8
		3CL8-21QC 3CL8-21BC 3CL8-21RC 3CL8-21FC	CG8

*Other elastomer options are available upon request

Continental Pump Company

29425 State Hwy B | Warrenton, Missouri 63383 | Tel: 636-456-6006 | Fax: 636-456-4337 | Email: sales@con-pump.com
Visit us at: www.continentalultrapumps.com



Part	Part Name	Continental Pump Part Number	For Continental Pump Model
	Rotor	1CG8-22D 2CG8-22D 3CG8-22D	CG8
**Undersized and Non-Plated Rotors are available upon request			
	Connecting Rod with 2 Clamp Rings (CG8/10-93S)	CG8/10-25CS	CG8
	Drive Shaft	CG8/10-26CS	CG8
	Spacer (2 Required)	CG8/10-27	CG8
	Ball Bearing (Radial)	CL10-29	CG8
	Ball Bearing (Thrust)	CL10-30	CG8
	Bearing Spacer	CL10-33CS	CG8
	Bearing Cover Plate	CG8/10-34C	CG8

Continental Pump Company

29425 State Hwy B | Warrenton, Missouri 63383 | Tel: 636-456-6006 | Fax: 636-456-4337 | Email: sales@con-pump.com
Visit us at: www.continentalultrapumps.com





Part	Part Name	Continental Pump Part Number	For Continental Pump Model
	Pump Support	CL10-37C	CG8
	Stator Support**	CL10-38C	CG8
	Support Bushing	CM8-71	CG8
	Packing Gland	CL10-41C	CG8
	Packing Set, Teflon Coated	CL10-42	CG8
	Packing Set, Graphite	CL10-42G	CG8
	Lantern Ring, Stainless Steel	CL10-57S	CG8
	Lantern Ring Set, Teflon	CL10-57T	CG8
	Bearing Lock Nut, Carbon Steel	CL10-58	CG8
	Bearing Lock Washer, Carbon Steel	CL10-59	CG8

**2 Stator Supports are required for 3CG8 Pumps.

Continental Pump Company

29425 State Hwy B | Warrenton, Missouri 63383 | Tel: 636-456-6006 | Fax: 636-456-4337 | Email: sales@con-pump.com
Visit us at: www.continentalultrapumps.com



Part	Part Name	Continental Pump Part Number	For Continental Pump Model
	Grease Seal (Radial)	CL10-61	CG8
	Grease Seal (Thrust)	CG8/10-62	CG8
	Grease Seal Retainer	CL10-63CS	CG8
	Packing Gland Insert	CL10-65S	CG8
	Slinger	CG8/10-77	CG8
	Adapter Gasket	CG8/10-79	CG8
	Bearing Cover Plate Gasket	CG8/10-85	CG8
	Connecting Rod Cover (2 Required)	CG8/10-87Q	CG8
	Connecting Rod Clamp Ring (2 Required)	CG8/10-93S	CG8
	Drive Shaft Head	CG8/10-97CS	CG8

Continental Pump Company

29425 State Hwy B | Warrenton, Missouri 63383 | Tel: 636-456-6006 | Fax: 636-456-4337 | Email: sales@con-pump.com
Visit us at: www.continentalultrapumps.com



Part	Part Name	Continental Pump Part Number	For Continental Pump Model
	O Ring (2 Required)	CG8/10-110	CG8
	Rotor Head Screw (8 Required)	CG10-114	CG8
	Shaft Washer (2 Required)	CG8/10-133	CG8
	Shaft Screw (4 Required)	CG8/10-134	CG8
	Inspection Plate (2 Required)	CG8/10-173C	CG8
	Inspection Plate Gasket (2 Required)	CG8/10-174	CG8
	Connecting Rod Nut (2 Required)	CG8/10-192	CG8
	Ball Gear (2 Required)	CG8/10-195CS Not sold individually See P/N: CG8/10-195K	CG8
	Ring Gear (2 Required)	CG8/10-196CS Not sold individually See P/N: CG8/10-195K	CG8
	Gear Joint Shell	CG8/10-197CS	CG8

Continental Pump Company

29425 State Hwy B | Warrenton, Missouri 63383 | Tel: 636-456-6006 | Fax: 636-456-4337 | Email: sales@con-pump.com
Visit us at: www.continentalultrapumps.com



Part	Part Name	Continental Pump Part Number	For Continental Pump Model
	Front Thrust Plate (2 Required)	CG8/10-198 Not sold individually See P/N: CG8/10-195K	CG8
	Rear Thrust Plate (2 Required)	CG8/10-199 Not sold individually See P/N: CG8/10-195K	CG8
	Head Ring	CG8/10-200CS	CG8
	Retainer Screw	CG8/10-201	CG8
	Shaft Keys (2 Required)	CG8/10-202CS	CG8
	Component Seal	CL10-81F	CG8
*Other elastomer options are available upon request			
	Component Seal Gland	CL10-82S	CG8
No Image Available	Cartridge Mechanical Seal	Contact Us	CG8

Continental Pump Company

29425 State Hwy B | Warrenton, Missouri 63383 | Tel: 636-456-6006 | Fax: 636-456-4337 | Email: sales@con-pump.com
Visit us at: www.continentalultrapumps.com



CG Model

Replacement Kits for CG8 Pump

Part	Part Name	Continental Pump Part Number	For Continental Pump Model
	<u>Gear Joint Kit:***</u> Includes: Qty 1: Connecting Rod Cover, Con Rod Nut, Shaft Lock Washer, Ball Gear, Ring Gear, Thrust Plate-Front, Thrust Plate-Rear, Spacer, O Ring; Qty 2: Shaft Key.	CG8/10-195K	CG8
***Gear Joint Kit repairs <u>ONE</u> gear joint.			
	<u>Component Seal Kit:</u> Includes QTY 1: Viton Component Seal & Stainless Steel Gland	CL10-81KFS	CG8

Continental Pump Company

29425 State Hwy B | Warrenton, Missouri 63383 | Tel: 636-456-6006 | Fax: 636-456-4337 | Email: sales@con-pump.com
 Visit us at: www.continentalultrapumps.com



Materials of Construction

All Continental Pump casting materials are Class 40# grey cast iron and CF8M (316) stainless steel. The best metal for your application would depend on how corrosive your liquid is. We offer an epoxy coating for an additional charge and can be applied to the suction housing and reducer. The epoxy seals the cast iron from the material being pumped.

Stators are available in 4 types of elastomers. The rubber materials are: Buna Nitrile, Natural Rubber, EPDM and Viton®. The rubber that is best for your application depends on what liquid you are pumping and at what temperature, as it plays a vital role in which to select.

The rotors are available in Chrome Plated Alloy Steel and Stainless Steel, but is dependent on the pH level and the corrosiveness of your liquid. In certain pH levels a non plated rotor may need to be used, as it could lift the chrome off of the rotor.

Looking for simplicity? We offer complete Progressive Cavity Pump Units. They are constructed on a steel base to fit your specific application needs. The Unit consists of a Pump, a Steel Base & Guard, a Gear Reducer and Motor. Also available are Belt Drive Units and many other base options.

Space Challenged? If you are needing a different arrangement from traditional piping, we can rotate the housing up to 270° for the CL, CM & CG Model Pumps.

Don't need a complete pumping unit but looking for drive options? We can still help, whether attached to a pump or sold separately we can supply you with Hydraulic Adapters, VFD's, Gear Boxes and Motors.

Continental Pump Company

29425 State Hwy B | Warrenton, Missouri 63383 | Tel: 636-456-6006 | Fax: 636-456-4337 | Email: sales@con-pump.com
Visit us at: www.continentalultrapumps.com