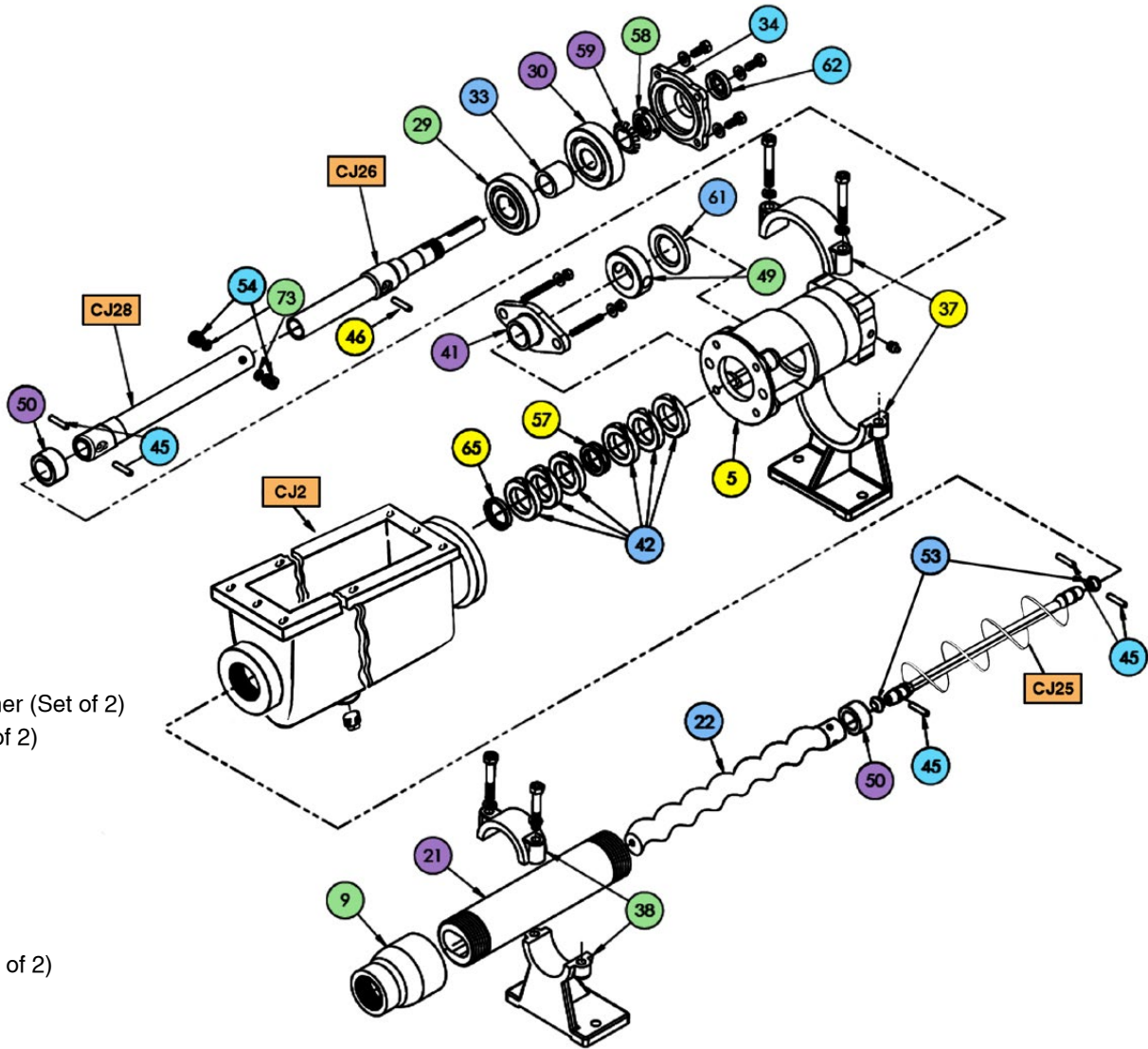
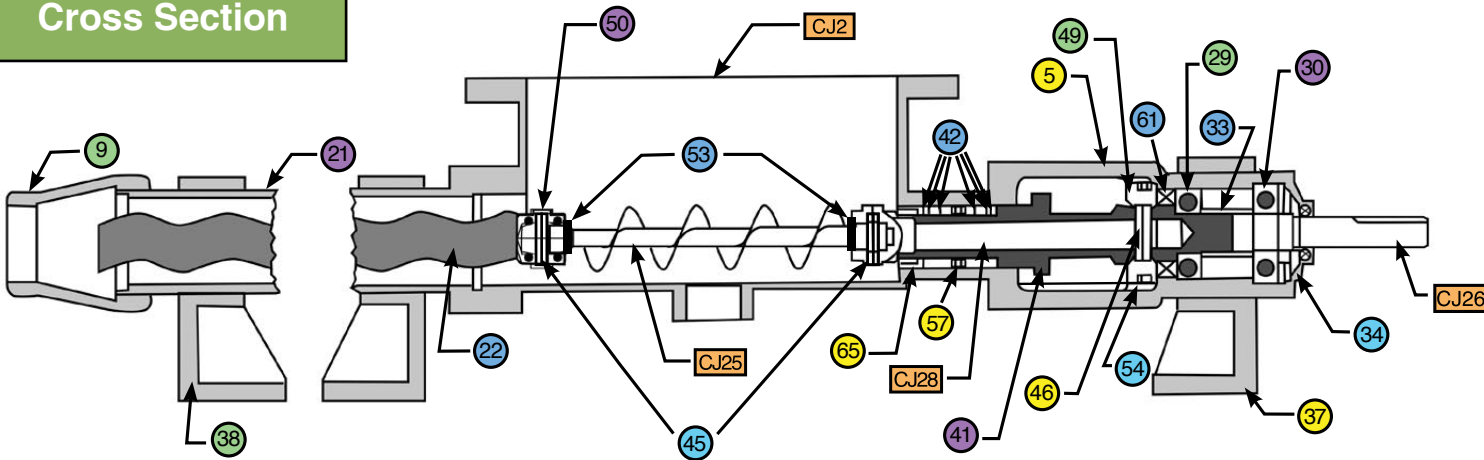


- CJ2 Hopper
- CJ25 Auger
- CJ26 Drive Shaft
- CJ28 Intermediate Shaft
- 5 Bearing Housing
- 9 Reducer
- 21 Stator
- 22 Rotor
- 29 Radial Bearing
- 30 Thrust Bearing
- 33 Bearing Spacer
- 34 Bearing Cover Plate
- 37 Pump Support
- 38 Stator Support
- 41 Packing Gland
- 42 Packing Set
- 45 Rotor Pin (Set of 2)
- 46 Shaft Pin
- 49 Shaft Collar
- 50 Rotor Band (Set of 2)
- 53 Connecting Rod Washer (Set of 2)
- 54 Drive Pin Screw (Set of 2)
- 57 Lantern Ring
- 58 Bearing Lock Nut
- 59 Bearing Lock Washer
- 61 Radial Seal
- 62 Thrust Seal
- 65 Packing Gland Insert
- 73 Drive Pin Washer (Set of 2)



### Cross Section



### Continental Pump Company