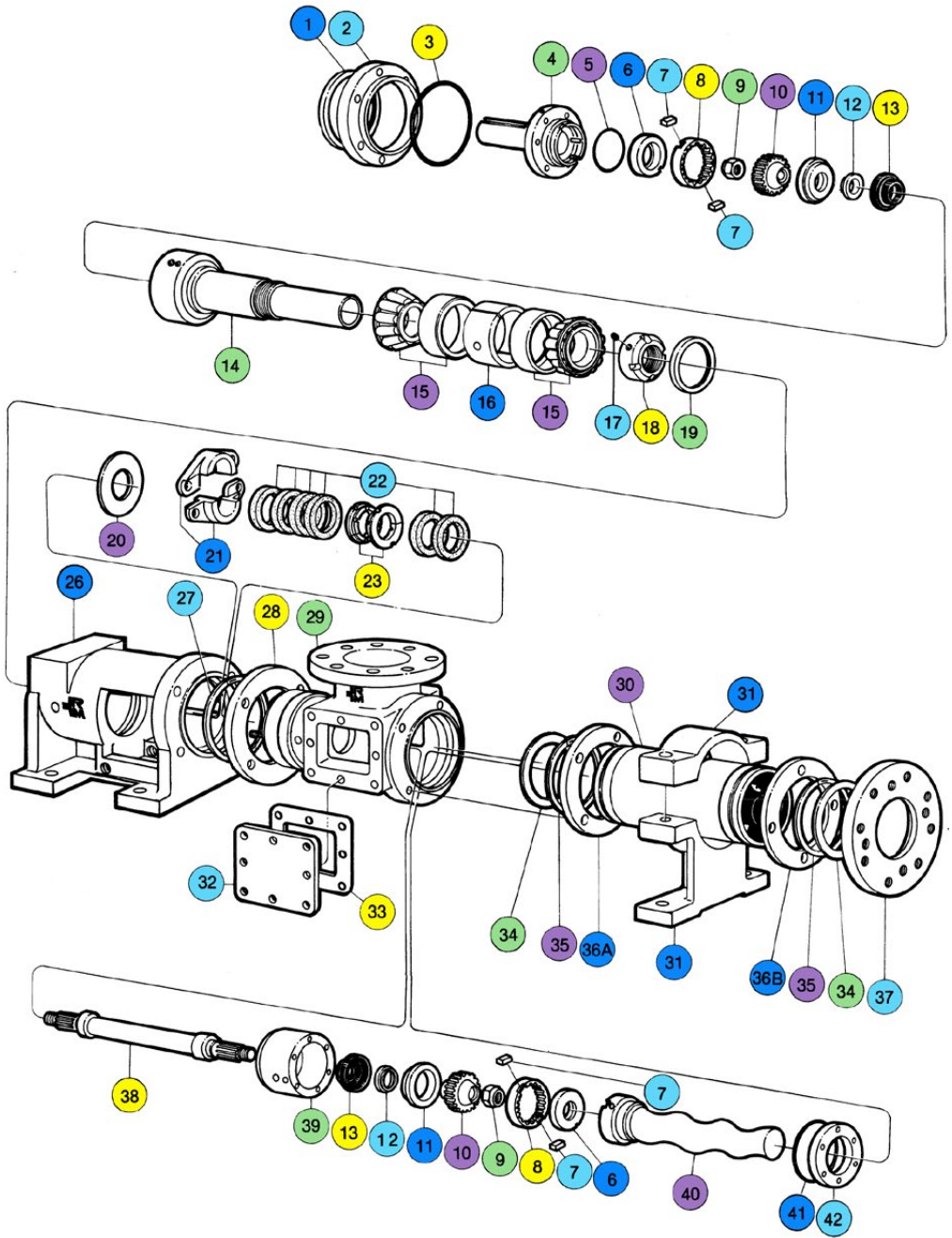


- ① Radial Grease Seal
- ② Bearing Cover Plate
- ③ O-Ring for Bearing Cover Plate
- ④ Drive Shaft Head
- ⑤ O-Ring for Shaft Head
- ⑥ Primary Thrust Plate
- ⑦ Rotor Key
- ⑧ Ring Gear
- ⑨ Lock Nut
- ⑩ Gear Ball
- ⑪ Secondary Thrust Plate
- ⑫ Seal Support
- ⑬ Gear Joint Seal
- ⑭ Drive Shaft
- ⑮ Tapered Roller Bearing
- ⑯ Bearing Spacer
- ⑰ Bearing Lock Plug
- ⑱ Bearing Lock Nut
- ⑲ Thrust Grease Seal
- ⑳ Slinger Ring
- ㉑ Packing Gland Set
- ㉒ Packing
- ㉓ Lantern Ring Set
- ㉔ Bearing Housing
- ㉕ Suction Housing Retaining Ring
- ㉖ Clamp Ring
- ㉗ Suction Housing
- ㉘ Stator
- ㉙ Stator Support
- ㉚ Inspection Plate
- ㉛ Inspection Plate Gasket
- ㉜ Stator Gasket
- ㉝ Stator Retaining Ring
- ㉞ A Stator Ring Clip
B Stator Clamp Ring
- ㉟ Discharge Flange
- ㊱ Connecting Rod
- ㊲ Gear Joint Shell
- ㊳ Rotor
- ㊴ O-Ring for Rotor Head
- ㊵ Head Ring



Gear Joint Kit (Includes quantity 1 each of part ⑥, ⑧, ⑩, ⑪, ⑫ and quantity of 2 of part ⑦.)

Bearing Kit (Includes quantity 1 each of part ①, ⑲ and quantity of 2 of part ⑮.)

Seal Kit 87 (Includes quantity 1 each of part ⑤, ⑴ and quantity of 2 of part ⑬.)

Seal Kit 88 (Includes quantity 1 each of part ⑤, ⑴ and quantity of 2 each of part ⑫, ⑬.)