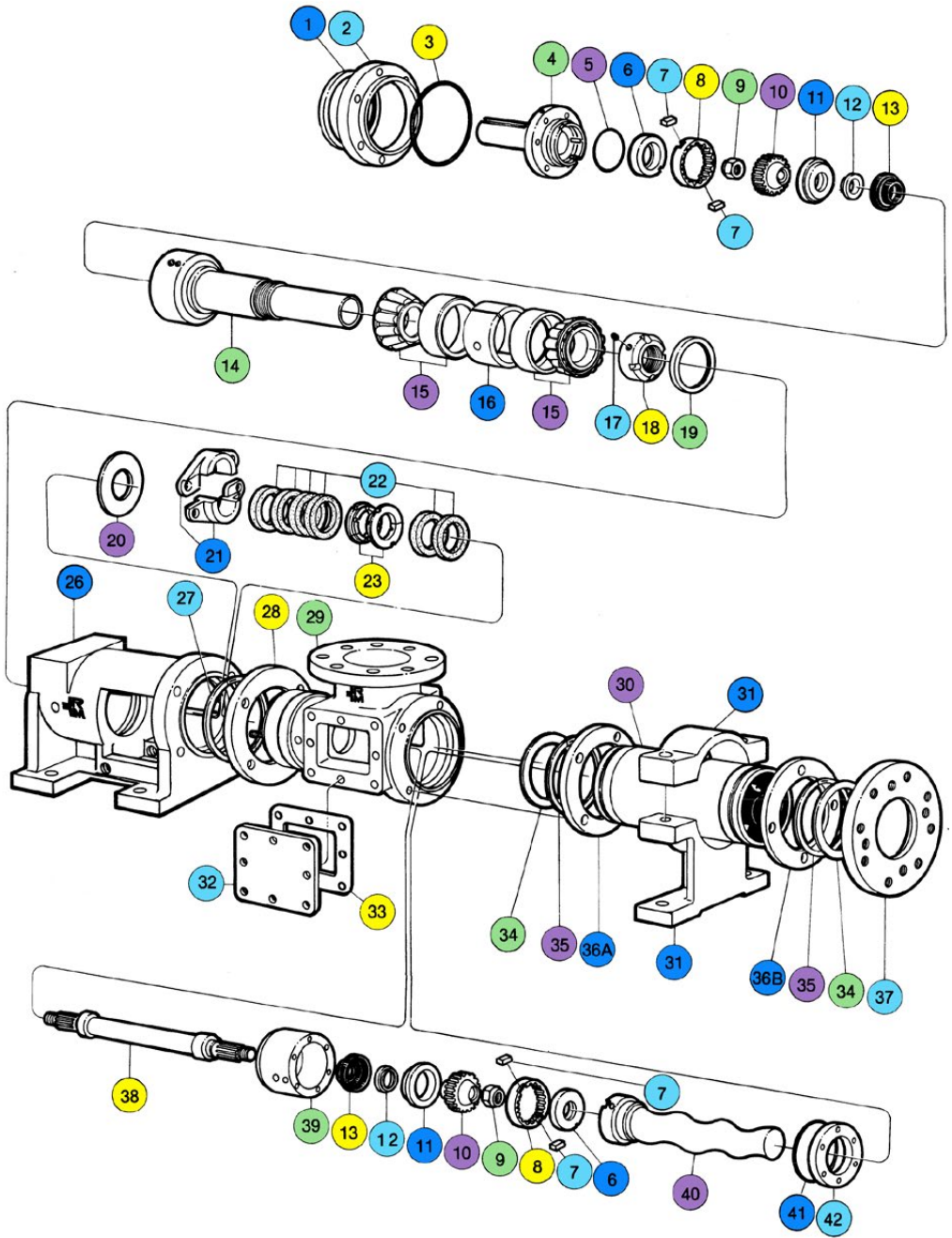


- 1 Radial Grease Seal
- 2 Bearing Cover Plate
- 3 O-Ring for Bearing Cover Plate
- 4 Drive Shaft Head
- 5 O-Ring for Shaft Head
- 6 Primary Thrust Plate
- 7 Rotor Key
- 8 Ring Gear
- 9 Lock Nut
- 10 Gear Ball
- 11 Secondary Thrust Plate
- 12 Seal Support
- 13 Gear Joint Seal
- 14 Drive Shaft
- 15 Tapered Roller Bearing
- 16 Bearing Spacer
- 17 Bearing Lock Plug
- 18 Bearing Lock Nut
- 19 Thrust Grease Seal
- 20 Slinger Ring
- 21 Packing Gland Set
- 22 Packing
- 23 Lantern Ring Set
- 26 Bearing Housing
- 27 Suction Housing Retaining Ring
- 28 Clamp Ring
- 29 Suction Housing
- 30 Stator
- 31 Stator Support
- 32 Inspection Plate
- 33 Inspection Plate Gasket
- 34 Stator Gasket
- 35 Stator Retaining Ring
- 36 A Stator Ring Clip
- 36 B Stator Clamp Ring
- 37 Discharge Flange
- 38 Connecting Rod
- 39 Gear Joint Shell
- 40 Rotor
- 41 O-Ring for Rotor Head
- 42 Head Ring



Gear Joint Kit (Includes quantity 1 each of part 6, 8, 10, 11, 12 and quantity of 2 of part 7.)

Bearing Kit (Includes quantity 1 each of part 1, 19 and quantity of 2 of part 15.)

Seal Kit 87 (Includes quantity 1 each of part 5, 41 and quantity of 2 of part 13.)

Seal Kit 88 (Includes quantity 1 each of part 5, 41 and quantity of 2 each of part 12, 13.)

Continental Pump Company