



Dimensions & Weights CL Frame Pumps

REV. 4/20/12

Drawing is on the next page

PUMP SIZE	DIMENSIONS (INCHES)																				WEIGHT (LBS.)	PORT SIZES		
	A	B	C	D	E	F	G	H	I	J	K	L	M	N	O	P	Q	R	W	Z		KEYWAY	SUCTION	DISCHARGE
1CL2	17	7-5/16	N/A	3-1/4	5-7/8	3-1/8	2	5/8	4-1/4	3/8	2	8-1/2	4-1/4	1-1/2	9/16	3-1/8	3/8	4-1/4	4	7/16	3/16 x 3/32	22	1"	3/4"
2CL2	20-1/2	10-7/8	N/A	3-1/4	5-7/8	3-1/8	2	5/8	5-3/4	3/8	2	10-1/2	4-1/4	1-1/2	9/16	3-1/8	3/8	4-1/4	4	7/16	3/16 x 3/32	25	1"	3/4"
3CL2	24-1/16	14-7/16	N/A	3-1/4	5-7/8	3-1/8	2	5/8	7-13/16	3/8	2	12	4-1/4	1-1/2	9/16	3-1/8	3/8	4-1/4	4	7/16	3/16 x 3/32	31	1"	3/4"
1CL3	22-3/3	10-1/8	N/A	4-1/8	7-5/16	4-1/4	3	3/4	5-9/16	7/16	3	11-1/2	5	2-1/8	9/16	3-7/8	1/2	5-11/16	5-3/8	9/16	3/16 x 3/32	47	1-1/2"	1-1/4"
2CL3	28-1/16	15-7/16	N/A	4-1/8	7-5/16	4-1/4	3	3/4	9-3/8	7/16	3	13	5	2-1/8	9/16	3-7/8	1/2	5-11/16	5-3/8	9/16	3/16 x 3/32	51	1-1/2"	1-1/4"
3CL3	33-3/8	20-3/4	N/A	4-1/8	7-5/16	4-1/4	3	3/4	11-3/16	7/16	3	16-1/2	5	2-1/8	9/16	3-7/8	1/2	5-11/16	5-3/8	9/16	3/16 x 3/32	55	1-1/2"	1-1/4"
1CL4	30	13-1/8	N/A	5-1/2	9-7/8	5-1/2	3-1/2	15/16	7-1/4	9/16	3	15-3/4	7	3-1/8	3/4	5-1/2	5/8	7	7	11/16	1/4 x 1/8	85	2-1/2"	2"
2CL4	37-1/8	20-1/4	N/A	5-1/2	9-7/8	5-1/2	3-1/2	15/16	8-1/8	9/16	3	22	7	3-1/8	3/4	5-1/2	5/8	7	7	11/16	1/4 x 1/8	91	2-1/2"	2"
3CL4	44-1/4	27-5/8	N/A	5-1/2	9-7/8	5-1/2	3-1/2	15/16	14-1/2	9/16	3	22-3/4	7	3-1/8	3/4	5-1/2	5/8	7	7	11/16	1/4 x 1/8	97	2-1/2"	2"
1CL6	39-1/8	17-13/16	N/A	6-1/4	11-1/4	7	4	1-1/8	10-9/16	11/16	4	20	7-1/2	4-3/8	3/4	6	11/16	8-9/16	8-5/8	7/8	1/4 x 1/8	141	3"	2-1/2"
2CL6	49-3/4	28-7/16	N/A	6-1/4	11-1/4	7	4	1-1/8	15-3/16	11/16	4	26	7-1/2	4-3/8	3/4	6	11/16	8-9/16	8-5/8	7/8	1/4 x 1/8	159	3"	2-1/2"
3CL6	60-3/8	39-1/16	18	6-1/4	11-1/4	7	4	1-1/8	13-13/16	11/16	4	20	7-1/2	4-3/8	3/4	6	11/16	8-9/16	8-5/8	7/8	1/4 x 1/8	192	3"	2-1/2"
1CL8	46	20-3/16	N/A	8	14	9	5	1-3/8	9-3/4	7/8	5	27	9	4-9/16	3/4	7-1/2	1-1/8	9-1/4	11-1/2	15/16	3/8 x 3/16	303	4"	4"
2CL8	58-3/8	32-5/8	N/A	8	14	9	5	1-3/8	17-1/8	7/8	5	32	9	4-9/16	3/4	7-1/2	1-1/8	9-1/4	11-1/2	15/16	3/8 x 3/16	332	4"	4"
3CL8	70-13/16	45	24	8	14	9	5	1-3/8	12-9/16	7/8	5	25	9	4-9/16	3/4	7-1/2	1-1/8	9-1/4	11-1/2	15/16	3/8 x 3/16	372	4"	4"
1CL10	53-1/8	21-7/8	N/A	9-3/4	16-11/16	9	5	1-7/8	9-5/8	7/8	5	30	11	5-3/8	7/8	9-1/2	1-1/8	13-1/2	11-1/2	1	1/2 x 1/4	412	6"	5"
2CL10	63-1/2	32-1/4	N/A	9-3/4	16-11/16	9	5	1-7/8	14-1/2	7/8	5	35-1/2	11	5-3/8	7/8	9-1/2	1-1/8	13-1/2	11-1/2	1	1/2 x 1/4	500	6"	5"
3CL10	73-7/8	42-5/8	18	9-3/4	16-11/16	9	5	1-7/8	12-3/8	7/8	5	30	11	5-3/8	7/8	9-1/2	1-1/8	13-1/2	11-1/2	1	1/2 x 1/4	545	6"	5"
1CL10H	58-1/2	27-1/4	N/A	9-3/4	16-11/16	9	5	1-7/8	15	7/8	5	30	11	5-3/8	7/8	9-1/2	1-1/8	13-1/2	11-1/2	1	1/2 x 1/4	424	6"	5"
2CL10H	73-7/8	42-5/8	18	9-3/4	16-11/16	9	5	1-7/8	12-3/8	7/8	5	30	11	5-3/8	7/8	9-1/2	1-1/8	13-1/2	11-1/2	1	1/2 x 1/4	545	6"	5"
1CL12	70	31	N/A	12-1/2	21	12-5/8	6	2-1/4	14-1/2	1	6	37-1/2	13-1/2	6	7/8	11-3/4	1-1/8	18	14-1/2	1-1/8	1/2 x 1/4	880	8"	6"
2CL12	85-1/2	46-1/2	20-1/2	12-1/2	21	12-5/8	6	2-1/4	12	1	6	35	13-1/2	6	7/8	11-3/4	1-1/8	18	14-1/2	1-1/8	1/2 x 1/4	1075	8"	6"
3CL12	101-1/8	62-1/8	27	12-1/2	21	12-5/8	6	2-1/4	14-1/8	1	6	42	13-1/2	6	7/8	11-3/4	1-1/8	18	14-1/2	1-1/8	1/2 x 1/4	1200	8"	6"
1CL12H	77-3/4	38-3/4	N/A	12-1/2	21	12-5/8	6	2-1/4	17-3/4	1	6	42	13-1/2	6	7/8	11-3/4	1-1/8	18	14-1/2	1-1/8	1/2 x 1/4	945	8"	6"
2CL12H	101-1/8	62-1/8	27	12-1/2	21	12-5/8	6	2-1/4	14-1/8	1	6	42	13-1/2	6	7/8	11-3/4	1-1/8	18	14-1/2	1-1/8	1/2 x 1/4	1205	8"	6"

Continental Pump Company

29425 State Hwy B | Warrenton, Missouri 63383 | Tel: 636-456-6006 | Fax: 636-456-4337 | Email: sales@con-pump.com

www.continentalultrapumps.com

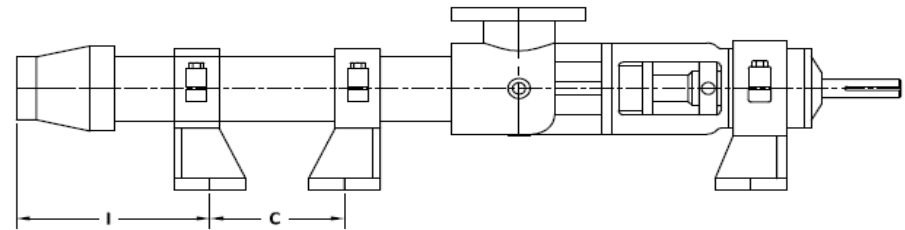
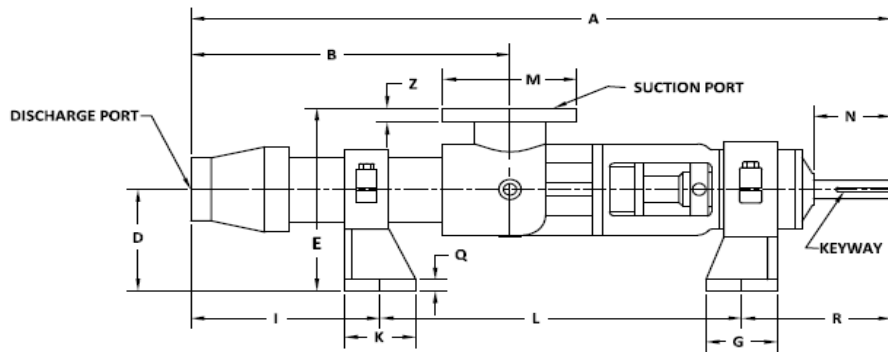
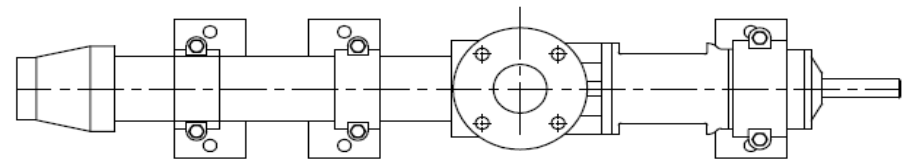
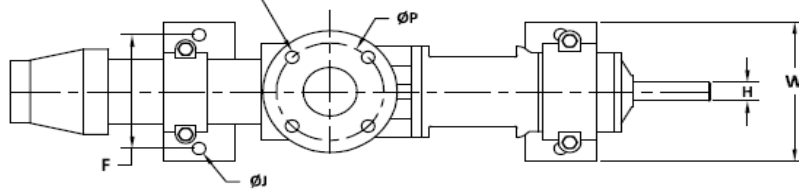


Dimensions & Weights

CL Frame Pumps

REV. 4/20/12

Ø DIA.-4 HOLES EXCEPT
CL8, CL10, CL10H, CL12, CL12H
WHICH HAVE 8-HOLES



Continental Pump Company

29425 State Hwy B | Warrenton, Missouri 63383 | Tel: 636-456-6006 | Fax: 636-456-4337 | Email: sales@con-pump.com

www.continentalultrapumps.com