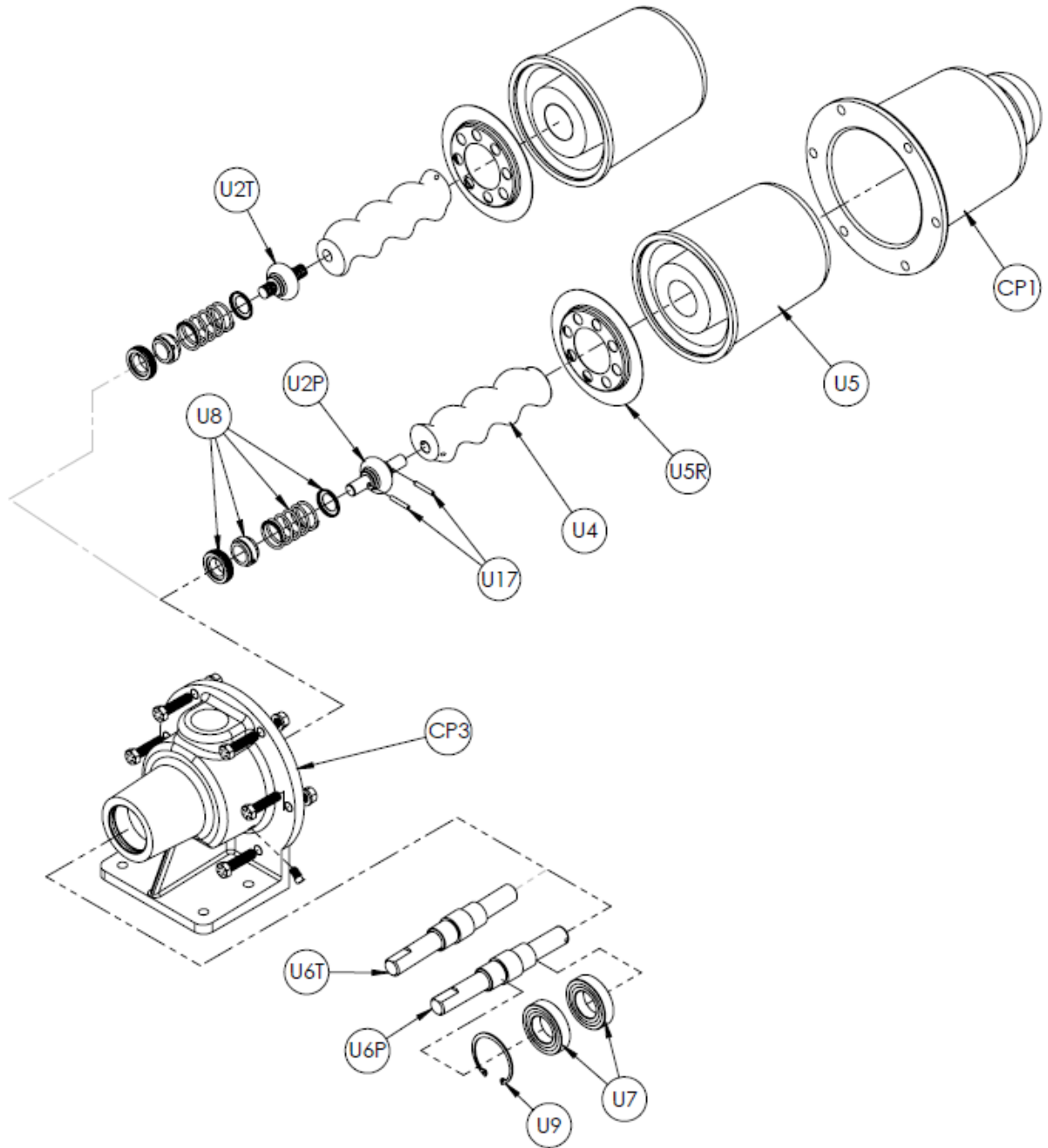




### Continental Progressive Cavity Pump CP Model CP56 Mechanical Seal Pump



#### Continental Pump Company

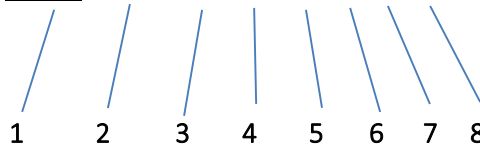
29425 State Hwy B | Warrenton, Missouri 63383 | Tel: 636-456-6006 | Fax: 636-456-4337 | Email: sales@con-pump.com  
Visit us at: [www.continentalultrapumps.com](http://www.continentalultrapumps.com)



## CP Model Number Nomenclature:

Materials used in the pumps are based on the fluid to be handled and are indicated in the model number nomenclature.

**CP56-CSQMTV**



- (1): Indicates the pump model designation (CP, CPM, CPML Model)
- (2): Indicates the pump frame size designation
- (3): Indicates the pump body casting material
- (4): Indicates the rotor material
- (5): Indicates the stator material
- (6): Indicates seal type: Mechanical Seal or Packed Seal (For Mechanical use M, for Packed use D)
- (7): Indicates if the Drive Shaft, Flex Joint, and Rotor is Pinned or Threaded. (For pinned use P, for threaded use T)
- (8): Indicates if the pump has vertical suction housing. If horizontal is preferred no designation will be used.

### Material of Construction

Continental Part Description	Continental Letter Designation	Part Materials
Pump Body	C	Cast Iron
	S	316 Stainless Steel (CF8M)
Rotor	D	Chrome Plated Alloy Steel
	S	Chrome Plated Stainless Steel
Stator	Q	Buna Nitrile
	B	EPDM
	F	Viton®
Seal Type	M	Mechanical Seal
	D	Packing Gland

Mechanical Seal and Packed Seal options are available for all frame sizes (15, 22, 33, 44, 56, and 67).

The Pinned Drive Shaft, Flex Joint, and Rotor option is also available for all frame sizes. The Threaded option is available only in frame sizes 15, 22, 33, 44, and 56; Size 67 has pinned option only.



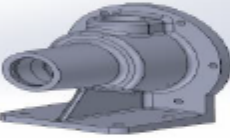


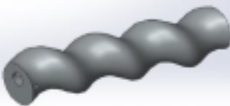


### Continental Pump Company

29425 State Hwy B | Warrenton, Missouri 63383 | Tel: 636-456-6006 | Fax: 636-456-4337 | Email: sales@con-pump.com  
Visit us at: [www.continentalultrapumps.com](http://www.continentalultrapumps.com)



## CP Pump

Replacement Parts  
for CP56 Mechanical Seal Pump

Part	Part Name	Continental Pump Part Number	For Continental Pump Model
	Suction Body	CP1-56C CP1-56S	CP56
	Suction Body, Vertical with 1/4" NPT Pipe Plug	CPV1-56C CPV1-56S	CP56
	Discharge Housing with 1/8" NPT Drain Plug	CP3-56C CP3-56S	CP56
	Flexible Joint, Pinned	U2-56PQS U2-56PBS U2-56PFS	CP56
	Flexible Joint, Threaded	U2-56TQS U2-56TBS U2-56TFS	CP56
	Rotor, Pinned & Threaded	U4-56PTS	CP56
	Stator	U5-56Q U5-56B U5-56F	CP56
	Stator Barrier (Optional)	U5R-56S	CP56

### Continental Pump Company

29425 State Hwy B | Warrenton, Missouri 63383 | Tel: 636-456-6006 | Fax: 636-456-4337 | Email: sales@con-pump.com  
Visit us at: [www.continentalultrapumps.com](http://www.continentalultrapumps.com)



Part	Part Name	Continental Pump Part Number	For Continental Pump Model
	Shaft, Pinned	U6-56PS	CP56
	Shaft, Threaded	U6-56TS	CP56
	Ball Bearing (2 Required)	U7-56	CP56
	Mechanical Seal	U8-56Q U8-56B U8-56F	CP56
	Mechanical Seal, Abrasive Resistant (Optional)	U8-56Q A/R U8-56B A/R U8-56F A/R	CP56
	Retaining Ring	U9-56	CP56
	1/4" NPT Pipe Plug for Vertical Suction Body	U11-56CS U11-56S	CP56
	1/8" NPT Drain Plug for Discharge Housing	U12-56CS U12-56S	CP56
	Roll Pins (for Pinned Pump Only, 2 Required)	U17-56S	CP56

**Continental Pump Company**

29425 State Hwy B | Warrenton, Missouri 63383 | Tel: 636-456-6006 | Fax: 636-456-4337 | Email: sales@con-pump.com  
Visit us at: www.continentalultrapumps.com



## CP Pump

Replacement Kits  
for CP56 Mechanical Seal Pump

Part	Part Name	Continental Pump Part Number	For Continental Pump Model
	<u>Pinned Rebuild Kit:</u> Includes: QTY 1: Flex Joint, Rotor, Stator, Mechanical Seal; Qty 2: Roll Pins	CP56K-PQS CP56K-PBS CP56K-PFS	CP56
	<u>Pinned Rebuild Kit with A/R Seal:</u> Includes: QTY 1: Flex Joint, Rotor, Stator, Mechanical Seal-Abrasive Resistant; Qty 2: Roll Pins	CP56K-PQS A/R CP56K-PBS A/R CP56K-PFS A/R	CP56
	<u>Threaded Rebuild Kit:</u> Includes: QTY 1: Flex Joint, Rotor, Stator, Mechanical Seal	CP56K-TQS CP56K-TBS CP56K-TFS	CP56
	<u>Threaded Rebuild Kit with A/R Seal:</u> Includes: QTY 1: Flex Joint, Rotor, Stator, Mechanical Seal-Abrasive Resistant	CP56K-TQS A/R CP56K-TBS A/R CP56K-TFS A/R	CP56
	<u>Bolt Kit:</u> Includes Qty 6: Bolts, Nuts & Washers. Qty 1: 1/8" NPT Drain Plug	U10-56CS	CP56

### Continental Pump Company

29425 State Hwy B | Warrenton, Missouri 63383 | Tel: 636-456-6006 | Fax: 636-456-4337 | Email: sales@con-pump.com  
Visit us at: [www.continentalultrapumps.com](http://www.continentalultrapumps.com)



## Materials of Construction

All Continental Pump casting materials are Class 40# grey cast iron and CF8M (316) stainless steel. The best metal for your application would depend on how corrosive your liquid is. We offer an epoxy coating for an additional charge and can be applied to the suction housing and discharge. The epoxy seals the cast iron from the material being pumped.

Stators are available in 3 types of elastomers. The rubber materials are: Buna Nitrile, EPDM and Viton®. The rubber that is best for your application depends on what liquid you are pumping and at what temperature, as it plays a vital role in which to select.

The rotors are available in Chrome Plated Stainless Steel.

Abrasive Resistance Mechanical Seals are a great upgrade for your more abrasive applications. By adding a Stator Barrier, which is recommended in any negative suction and/or vacuum application to help protect the stator. There are lots of variables to take in consideration to know if this is right for your application. Contact us with your application information to see if this is for you.

**Looking for simplicity?** We offer complete Progressive Cavity Pump Units. They are constructed on a steel base to fit your specific application needs. The Unit consists of a Pump, a Steel Base & Guard, a Gear Reducer and Motor. Also available are Belt Drive Units, Gas or Diesel Engines, and many other base options.

**Space Challenged?** If you are needing a different arrangement from traditional piping, we have vertical suction housings available in the CP Model.

**Don't need a complete pumping unit but looking for drive options?** We can still help, whether attached to a pump or sold separately we can supply you with VFD's, Motors and Bases.

### Continental Pump Company

29425 State Hwy B | Warrenton, Missouri 63383 | Tel: 636-456-6006 | Fax: 636-456-4337 | Email: [sales@con-pump.com](mailto:sales@con-pump.com)  
Visit us at: [www.continentalultrapumps.com](http://www.continentalultrapumps.com)