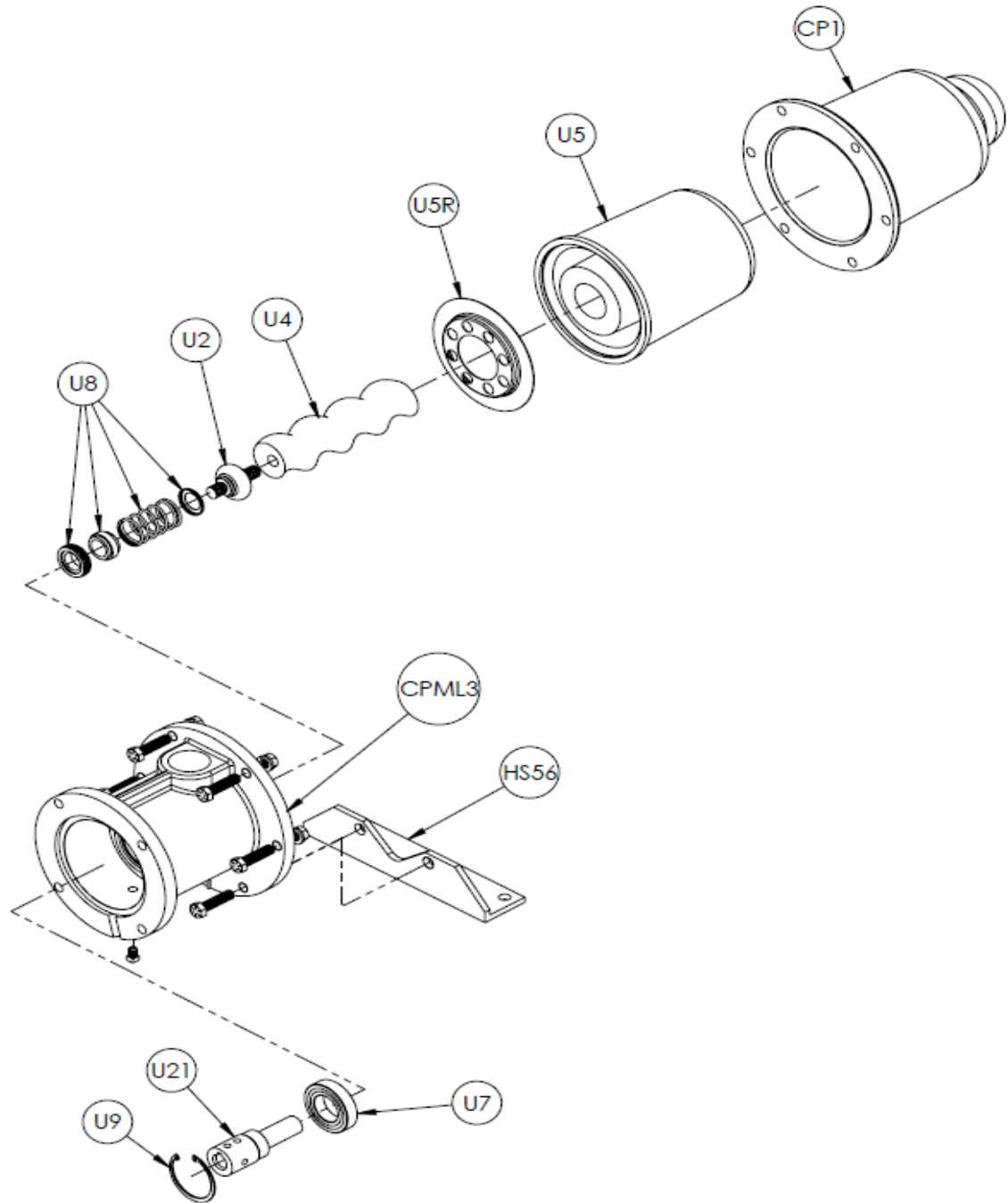




Continental Progressive Cavity Pump CP Model  
CPML56 Close-Coupled Pump Driven with a Standard Motor



Pump bolts to any Nema Frame 56 C-Face motor with feet.

**Continental Pump Company**

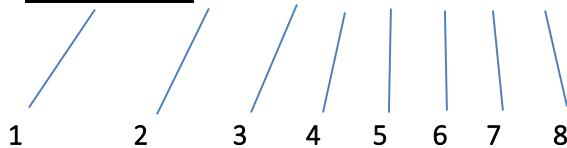
29425 State Hwy B | Warrenton, Missouri 63383 | Tel: 636-456-6006 | Fax: 636-456-4337 | Email: sales@con-pump.com  
Visit us at: [www.continentalultrapumps.com](http://www.continentalultrapumps.com)



## CP Model Number Nomenclature:

Materials used in the pumps are based on the fluid to be handled and are indicated in the model number nomenclature.

**CPML56-CSQMTV**



- (1): Indicates the pump model designation (CP, CPM, CPML Model)
- (2): Indicates the pump frame size designation
- (3): Indicates the pump body casting material
- (4): Indicates the rotor material
- (5): Indicates the stator material
- (6): Indicates seal type: Mechanical Seal
- (7): Indicates that the Drive Shaft, Flex Joint, and Rotor is Threaded. (For pinned use P, for threaded use T)
- (8): Indicates if the pump has vertical suction housing. If horizontal is preferred no designation will be used.

### Material of Construction

Continental Part Description	Continental Letter Designation	Part Materials
Pump Body	C	Cast Iron
	S	316 Stainless Steel (CF8M)
Rotor	D	Chrome Plated Alloy Steel
	S	Chrome Plated Stainless Steel
Stator	Q	Buna Nitrile
	B	EPDM
	F	Viton®
Seal Type	M	Mechanical Seal
	D	Packing Gland

Mechanical Seal option is available for all frame sizes (15, 22, 33, 44, 56, and 67).

The Threaded Drive Shaft, Flex Joint, and Rotor option is available only in frame sizes 15, 22, 33, 44, and 56; Size 67 has pinned option only.

### Continental Pump Company

29425 State Hwy B | Warrenton, Missouri 63383 | Tel: 636-456-6006 | Fax: 636-456-4337 | Email: sales@con-pump.com  
 Visit us at: [www.continentalultrapumps.com](http://www.continentalultrapumps.com)



## CPML Pump

### Replacement Parts

for CPML56 Close-Coupled Pump Driven with a Standard Motor

Part	Part Name	Continental Pump Part Number	For Continental Pump Model
	Suction Body	CP1-56C CP1-56S	CPML56
	Suction Body, Vertical with 1/4" NPT Pipe Plug	CPV1-56C CPV1-56S	CPML56
	Discharge Housing with 1/8" NPT Drain Plug	CPML3-56C CPML3-56S	CPML56
	Flexible Joint, Threaded	U2-56TQS U2-56TBS U2-56TFS	CPML56
	Rotor, Pinned & Threaded	U4-56PTS	CPML56
	Stator	U5-56Q U5-56B U5-56F	CPML56
	Stator Barrier (Optional)	U5R-56S	CPML56
	Ball Bearing	U7-56PE	CPML56

### Continental Pump Company

29425 State Hwy B | Warrenton, Missouri 63383 | Tel: 636-456-6006 | Fax: 636-456-4337 | Email: sales@con-pump.com  
Visit us at: [www.continentalultrapumps.com](http://www.continentalultrapumps.com)



Part	Part Name	Continental Pump Part Number	For Continental Pump Model
	Mechanical Ring	U8-56Q U8-56B U8-56F	CPML56
	Mechanical Ring, Abrasive Resistant (Optional)	U8-56Q A/R U8-56B A/R U8-56F A/R	CPML56
	Retaining Ring	U9-56	CPML56
	1/4" NPT Pipe Plug for Vertical Suction Body	U11-56CS U11-56S	CPML56
	1/8" NPT Drain Plug for Discharge Housing	U12-56CS U12-56S	CPML56
	Motor Coupling	U21-56S	CPML56
	Housing Support	CPM56-HS	CPML56
	Steel Base	CPM-910-56/67	CPM56

**Motor Options:** The CPML pump can be bolted to any NEMA Frame 56 C-Face Motor with Feet. The minimum horsepower requirement for this Pump is a 1.5 HP motor.

**Continental Pump Company**

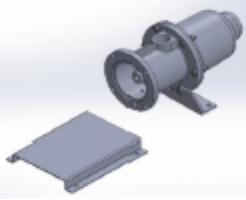
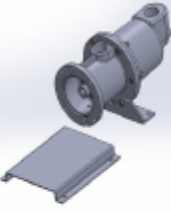
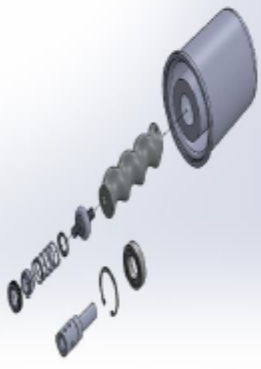

29425 State Hwy B | Warrenton, Missouri 63383 | Tel: 636-456-6006 | Fax: 636-456-4337 | Email: sales@con-pump.com  
Visit us at: [www.continentalultrapumps.com](http://www.continentalultrapumps.com)



## CPML Pump

Replacement Kits

for CPML56 Close-Coupled Pump Driven with a Standard Motor

Part	Part Name	Continental Pump Part Number	For Continental Pump Model
	<u>Pump End Kit*</u> : Includes CPML Cast Iron Pump less Motor	CPML56K-CSQMT CPML56K-CSBMT CPML56K-CSFMT	CPML56
	<u>Pump End Kit*</u> : Includes CPML Stainless Steel Pump less Motor	CPML56K-SSQMT CPML56K-SSBMT CPML56K-SSFMT	CPML56
	<u>Vertical Pump End Kit*</u> : Includes CPML Cast Iron Pump less Motor	CPML56K-CSQMTV CPML56K-CSBMTV CPML56K-CSFMTV	CPML56
	<u>Vertical Pump End Kit*</u> : Includes CPML Stainless Steel Pump less Motor	CPML56K-SSQMTV CPML56K-SSBMTV CPML56K-SSFMTV	CPML56
	<u>Rebuild Kit</u> : Includes: QTY 1: Flex Joint, Rotor, Stator, Mechanical Seal, Bearing, Retaining Ring & Motor Coupling	CPML56K-TQS CPML56K-TBS CPML56K-TFS	CPML56
	<u>Rebuild Kit</u> : Includes: QTY 1: Flex Joint, Rotor, Stator, Mechanical Seal-Abrasive Resistant, Bearing, Retaining Ring & Motor Coupling	CPML56K-TQS A/R CPML56K-TBS A/R CPML56K-TFS A/R	CPML56
	<u>Bolt Kit</u> : Includes Qty 8: Pump Body Bolts, Washers & Nuts. Qty 4: Motor Base Bolts with 4 Flat & 4 Lock Washers. Qty 4: C-Face Motor Bolts & Washers. Qty 1: 1/8" NPT Drain Plug	U10-56MC	CPML56

\* New Housing Configuration includes Bearing and Retaining Ring. Abrasive Resistant Seal is also available, contact us.

**Pump End Kit requires no assembly and will bolt to any 56 C-Face Motor with feet. This Kit is issued with a Pump Tag and Serial Number.**

### Continental Pump Company

29425 State Hwy B | Warrenton, Missouri 63383 | Tel: 636-456-6006 | Fax: 636-456-4337 | Email: sales@con-pump.com  
 Visit us at: [www.continentalultrapumps.com](http://www.continentalultrapumps.com)



## Materials of Construction

All Continental Pump casting materials are Class 40# grey cast iron and CF8M (316) stainless steel. The best metal for your application would depend on how corrosive your liquid is. We offer an epoxy coating for an additional charge and can be applied to the suction housing and discharge. The epoxy seals the cast iron from the material being pumped.

Stators are available in 3 types of elastomers. The rubber materials are: Buna Nitrile, EPDM and Viton®. The rubber that is best for your application depends on what liquid you are pumping and at what temperature, as it plays a vital role in which to select.

The rotors are available in Chrome Plated Stainless Steel.

Abrasive Resistance Mechanical Seals are a great upgrade for your more abrasive applications. By adding a Stator Barrier, which is recommended in any negative suction and/or vacuum application to help protect the stator. There are lots of variables to take in consideration to know if this is right for your application. Contact us with your application information to see if this is for you.

**Looking for simplicity?** We offer complete Progressive Cavity Pump Units. They are constructed on a steel base to fit your specific application needs. The Unit consists of a Pump, a Steel Base & Guard, a Gear Reducer and Motor. Also available are Belt Drive Units, Gas or Diesel Engines, and many other base options.

**Space Challenged?** If you are needing a different arrangement from traditional piping, we have vertical suction housings available in the CP Model.

**Don't need a complete pumping unit but looking for drive options?** We can still help, whether attached to a pump or sold separately we can supply you with VFD's, Motors and Bases.

### **Continental Pump Company**

29425 State Hwy B | Warrenton, Missouri 63383 | Tel: 636-456-6006 | Fax: 636-456-4337 | Email: [sales@con-pump.com](mailto:sales@con-pump.com)  
Visit us at: [www.continentalultrapumps.com](http://www.continentalultrapumps.com)